

# THE CHESHIRE PATIO HOME AT FORT PLAIN



*The*  
**RESERVE**  
— ON THE ERIE CANAL —  
BRIGHTON

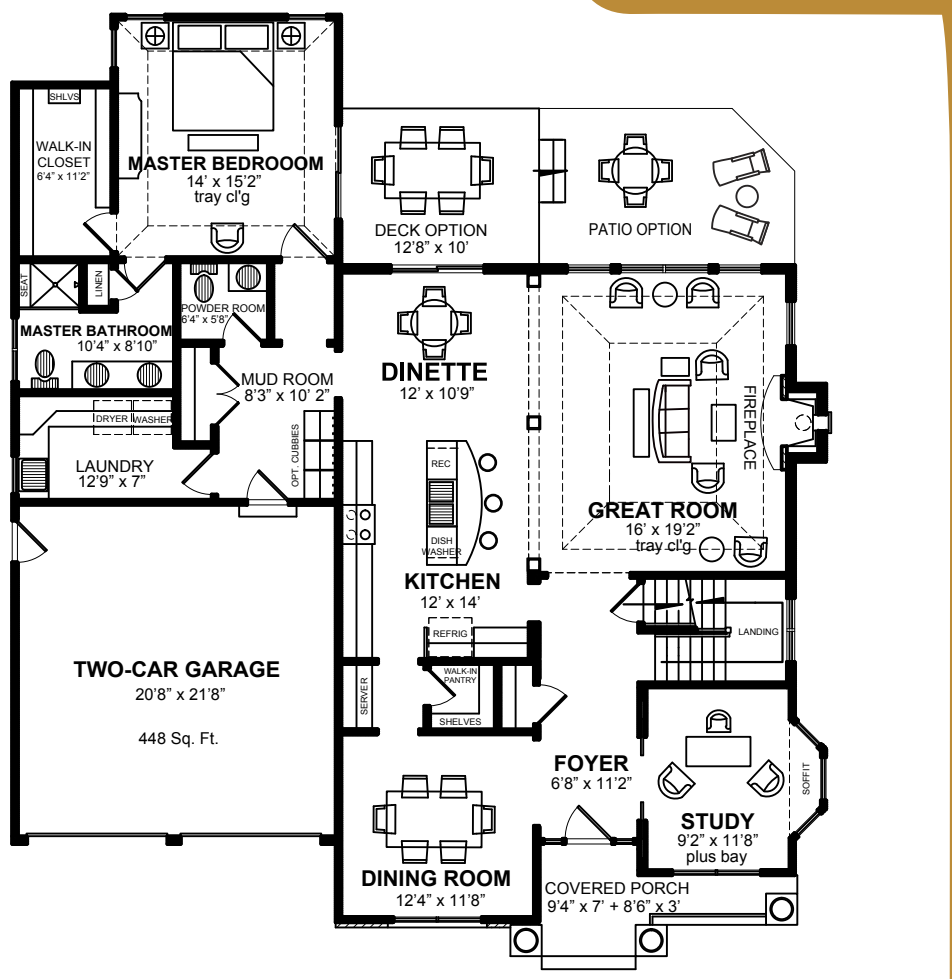
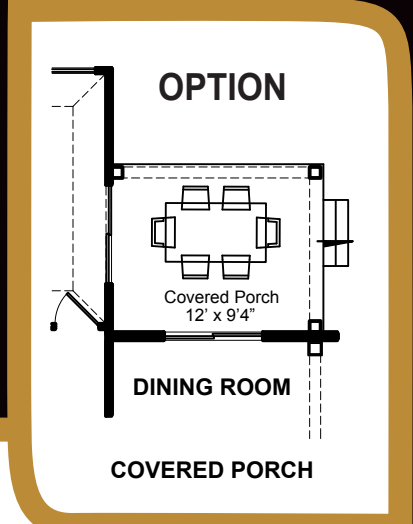
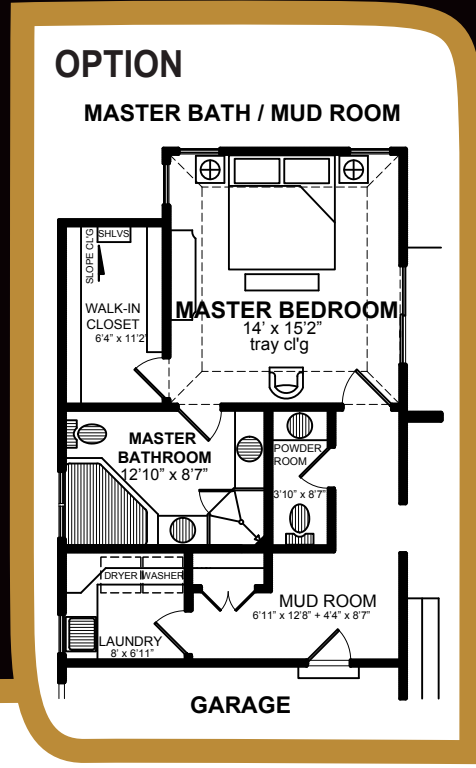
AN ANTHONY J. COSTELLO & SON DEVELOPMENT

# THE CHESHIRE PATIO HOME AT FORT PLAIN

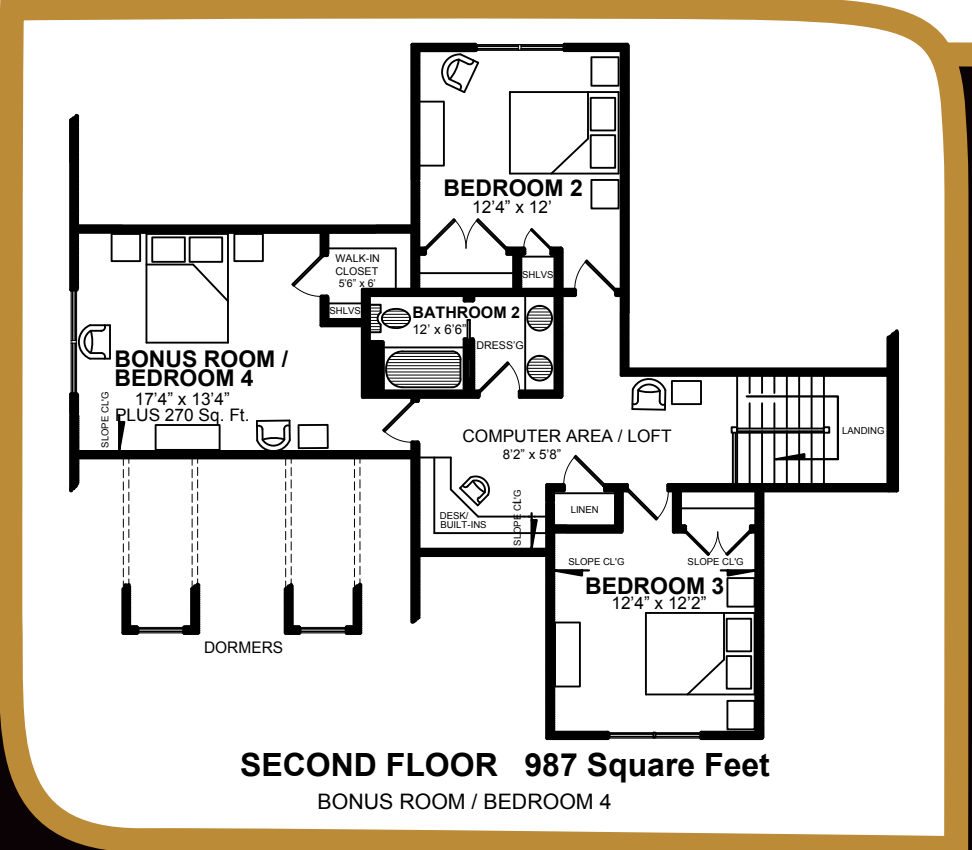
**4 Bedrooms & Study**  
**2 1/2 Baths**  
**Basement 1,807 Sq. Ft.**  
**Attached 448 Sq. Ft. 2-Car Garage**

First Floor 1,807 Square Feet  
 Second Floor 987 Square Feet  
**Total Living Area 2,794 Square Feet**

## Fort Plain Patio Homes



**FIRST FLOOR 1,807 Square Feet**



**SECOND FLOOR 987 Square Feet**  
 BONUS ROOM / BEDROOM 4

*The*  
**RESERVE**  
 — ON THE ERIE CANAL —  
 BRIGHTON

585-272-6500  
 info@brightonreserve.com  
 www.BrightonReserve.com

Drawings and renderings may not be accurate and are used solely for the purpose of advertisement and sales. Floor plan dimensions on illustrations are approximate in some cases. The complete offering terms are in an offering plan available from sponsor. File No. HO12-0001

# THE CHESHIRE PATIO HOME AT FORT PLAIN

AN ANTHONY J. COSTELLO & SON DEVELOPMENT

# THE CHESHIRE PATIO HOME AT FORT PLAIN

*Like nowhere you've ever lived. Homeowners at The Reserve have an elegant venue for a healthy lifestyle filled with family, friends, and so much more. The Reserve is a masterpiece community like no other. You'll enjoy:*

## Master Homeowner's Association (HOA)

*Peace-of-mind, enjoyment, affordability – the HOA gives you more of what you love and takes care of what you don't.*

- Includes membership to all Clubhouse amenities and activities.
- Driveway snow removal.
- Refuse and recycling pickup.
- Access to expansive trail systems.
- Landscaping maintenance including lawn service.

## Structural/Mechanical Details

*Take comfort knowing that high quality, safety, and durability are built into every home.*

- 9-foot high concrete basement walls.
- Welcoming front covered entry.
- Optional back deck, natural slate patio and/or covered sun porch.
- 6-inch seamless metal gutters.
- Metal-insulated pedestrian doors available in a variety of styles.
- Sophisticated security system with available safety options.
- Attractive exterior masonry accents.
- Energy Star high efficiency windows.
- Natural slate front walkway.
- 40-gallon hot water tank with option to increase to 50-gallon tank.
- Air conditioning and high efficiency, natural gas forced air heat.

- Optional humidifier.
- Two exterior hose faucets.
- Optional computer and data wiring.
- Ample electrical outlets to accommodate modern needs.

## Interior Details

*In a home built for living, details provide comfortable elegance and timeless style.*

- Spacious and open floor plan with 9- to 12-foot ceilings (see plan for details).
- Great room with gas fireplace accented with masonry surround.
- Doors with handsome yet practical hardware choices.
- Baseboards and casings selected for a refined style.
- Optional crown molding, chair rail, and built-in cabinets and/or book cases.
- A wide variety of flooring options.
- Abundant natural light and outside views provided in dining room and great room.
- Stately architectural columns and tray ceiling in great room.
- Inviting bay window in the study.
- Second floor with additional bedrooms and bonus room for ample multi-use space.
- Traditional staircase with landing.

*Generous rooms with well-appointed fixtures and appliances lend ease and luxury to daily life while providing a designer-coordinated look. Customization options personalize your home.*

## Master Bedroom and Master Bathroom

- Large walk-in closet with abundant shelving.
- Elegant master bedroom with tray ceiling.
- Convenient, accommodating double-bowl his and her vanity.
- Optional whirlpool tub and separated his and her vanities.
- Countertop choices from a range of products such as granite.
- Cabinet choices from an array of wood species and finishes.

## Kitchen and Bathrooms

- Kohler or equal fixtures for beauty, style, and dependability.
- Coordinated countertops, cabinets, and flooring choices from a suite of products and options.
- Stool seating at raised kitchen counter island.
- Energy Star appliances including refrigerator, dishwasher, gas range/oven, microwave, and disposal.
- Walk-in pantry with shelving and server.

## Laundry Room and Mud Room

- Spacious first floor laundry room with generous storage and counters.
- Washer and dryer connections available for immediate use.
- Optional built-in cubbies in mud room for organized, convenient storage.



585-272-6500

[info@brightonreserve.com](mailto:info@brightonreserve.com)

[www.BrightonReserve.com](http://www.BrightonReserve.com)

