

THE ABBEY PATIO HOME AT FORT PLAIN



The
RESERVE
— ON THE ERIE CANAL —
BRIGHTON

AN ANTHONY J. COSTELLO & SON DEVELOPMENT

THE ABBEY PATIO HOME AT FORT PLAIN

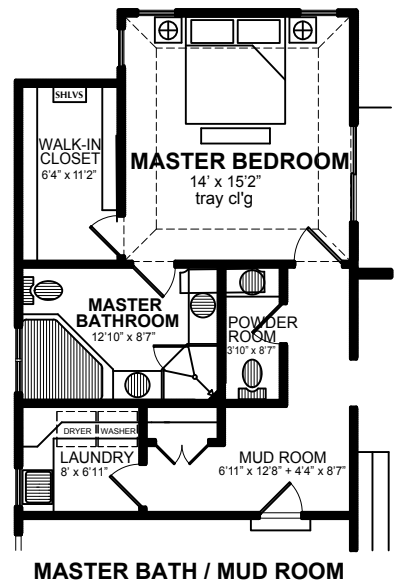
3 Bedrooms & Study
2 1/2 Baths
Basement 1,807 Sq. Ft.
Attached 448 Sq. Ft. 2-Car Garage

First Floor 1,807 Square Feet

Second Floor 666 Square Feet

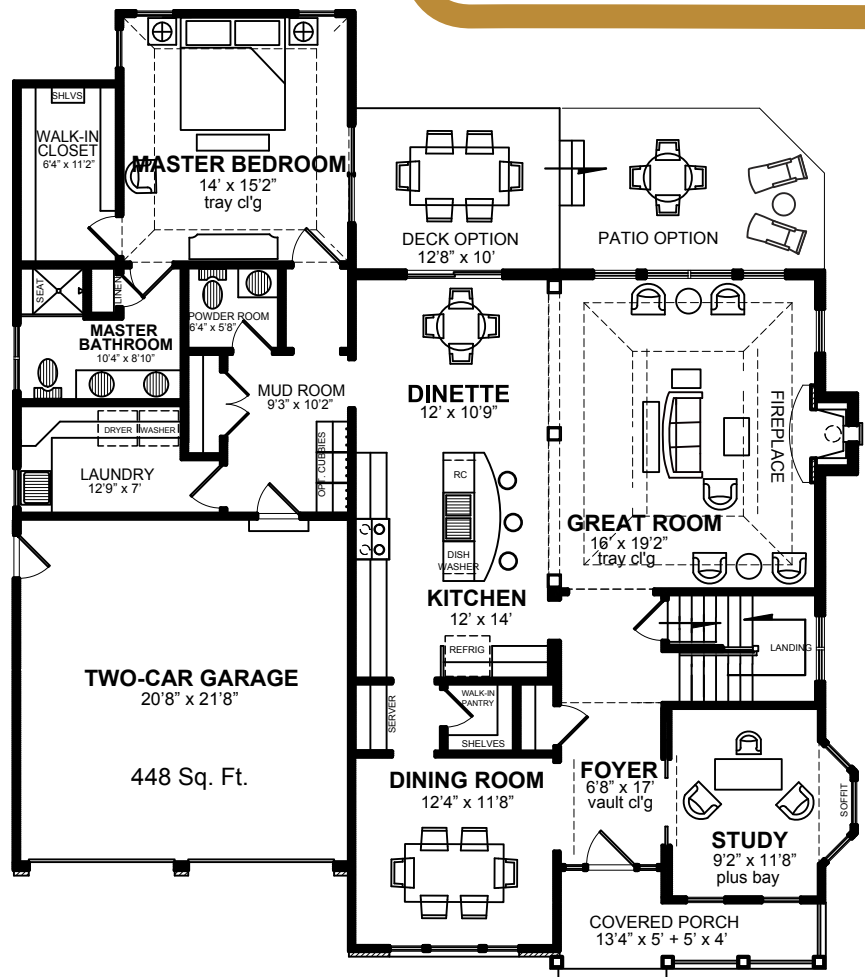
Total Living Area 2,473 Square Feet

OPTION



MASTER BATH / MUD ROOM

Fort Plain Patio Homes

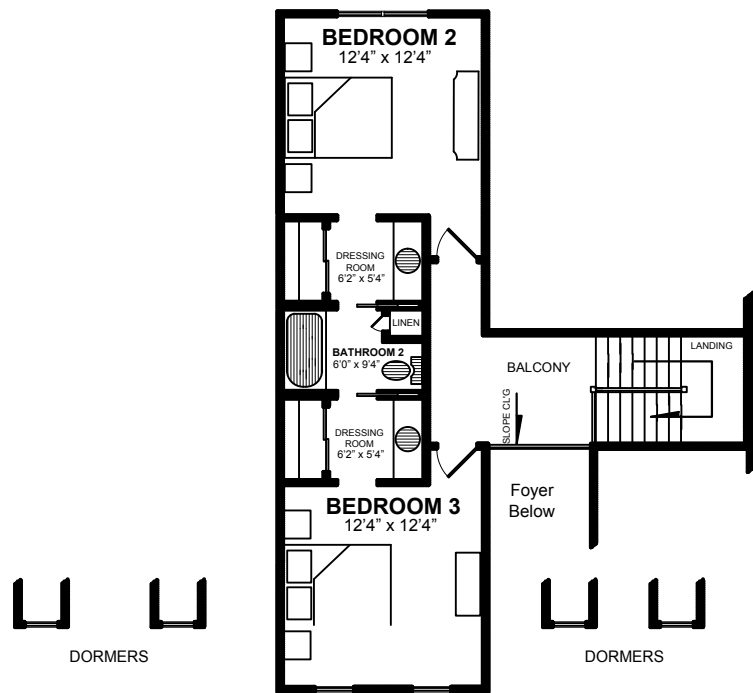


FIRST FLOOR

1,807 Square Feet

The
RESERVE
 — ON THE ERIE CANAL —
 BRIGHTON

585-272-6500
info@brightonreserve.com
www.BrightonReserve.com



SECOND FLOOR

666 Square Feet

Drawings and renderings may not be accurate and are used solely for the purpose of advertisement and sales. Floor plan dimensions on illustrations are approximate in some cases. The complete offering terms are in an offering plan available from sponsor. File No. HO12-0001

THE ABBEY PATIO HOME AT FORT PLAIN

AN ANTHONY J. COSTELLO & SON DEVELOPMENT

THE ABBEY PATIO HOME AT FORT PLAIN

Like nowhere you've ever lived. Homeowners at The Reserve have an elegant venue for a healthy lifestyle filled with family, friends, and so much more. The Reserve is a masterpiece community like no other. You'll enjoy:

Master Homeowner's Association (HOA)

Peace-of-mind, enjoyment, affordability – the HOA gives you more of what you love and takes care of what you don't.

- Includes membership to all Clubhouse amenities and activities.
- Driveway snow removal.
- Refuse and recycling pickup.
- Access to expansive trail systems.
- Landscaping maintenance including lawn service.

Structural/Mechanical Details

Take comfort knowing that high quality, safety, and durability are built into every home.

- 9-foot high concrete basement walls.
- Welcoming front covered porch.
- Optional back deck and/or natural slate patio.
- 6-inch seamless metal gutters.
- Metal-insulated pedestrian doors available in a variety of styles.
- Sophisticated security system with available safety options.
- Dormers and exterior masonry accents.
- Energy Star high efficiency windows.
- Natural slate front walkway.
- 40-gallon hot water tank with option to increase to 50-gallon tank.
- Air conditioning and high efficiency, natural gas forced air heat.

- Optional humidifier.
- Two exterior hose faucets.
- Optional computer and data wiring.
- Ample electrical outlets to accommodate modern needs.

Interior Details

In a home built for living, details provide comfortable elegance and timeless style.

- Spacious and open floor plan with 9- to 12-foot ceilings (see plan for details).
- Great room with gas fireplace accented with masonry surround.
- Doors with handsome yet practical hardware choices.
- Baseboards and casings selected for a refined style.
- Optional crown molding, chair rail, and built-in cabinets and/or book cases.
- A wide variety of flooring options.
- Abundant natural light and outside views provided in dining room and great room.
- Inviting bay window in study and vaulted ceiling in foyer.
- Stately architectural columns and tray ceiling in great room.
- Traditional staircase with landing.
- Upper floor balcony with view to foyer below.
- Separate dressing areas for second floor bedrooms.

Generous rooms with well-appointed fixtures and appliances lend ease and luxury to daily life while providing a designer-coordinated look. Customization options personalize your home.

Master Bedroom and Master Bathroom

- Large walk-in closet with abundant shelving.
- Elegant master bedroom with tray ceiling.
- Convenient, accommodating double-bowl his and her vanity.
- Optional whirlpool tub and separated his and her vanities.
- Countertop choices from a range of products such as granite.
- Cabinet choices from an array of wood species and finishes.

Kitchen and Bathrooms

- Kohler or equal fixtures for beauty, style, and dependability.
- Coordinated countertops, cabinets, and flooring choices from a suite of products and options.
- Stool seating at raised kitchen counter island.
- Energy Star appliances including refrigerator, dishwasher, gas range/oven, microwave, and disposal.
- Walk-in pantry with shelving and server.

Laundry Room and Mud Room

- Spacious first floor laundry room with generous storage and counters.
- Washer and dryer connections available for immediate use.
- Optional built-in cubbies in mud room for organized, convenient storage.



585-272-6500

info@brightonreserve.com

www.BrightonReserve.com

